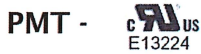


PM Series 10A - 35A Power Relay 4PDT

Certifications:



The PM Series relays offer 4 double throw poles (4PDT) for up to 35 amp and up to 277 VAC or 20 amp at 30 VDC. Product also is capable of 10 amps tungsten switching. Screw terminals (8-32) are standard or .250" Quick Connect Terminals (PMT) are an option.



GENERAL SPECIFICATIONS (@ 25° C)

Contacts:

Contact Configuration 4PDT
Contact Material Silver Alloy
Contact Resistance, Initial 100 milliohms max @ 6VDC

Contact Rating

20 Amp, 30 VDC / Pole
35 Amp, 277VAC / Pole, Resistive
1.5 Hp, 240VAC (240 VAC / Pole)
2.0 Hp, 480 VAC (277 VAC / Pole)
10 Amp, 240 VAC / Pole Tungsten
10 Amp, 480 VAC (277 VAC/ Pole)

PMC (When cover is added) 20 Amp, 3 Phase 240 VAC / Pole
1HP - 120/240 VAC

Coil:

Coils Available AC and DC
Nominal Coil Power 14VA 4.4W
Input Voltage Tolerance - AC 85% to 110% of nominal
Input Voltage Tolerance - DC 80% to 110% of nominal
Drop-out voltage 10% of nominal
Duty Continuous

Timing:

Operate Time (max) 40ms
Release Time (max) 30ms

Dielectric Strength:

Across Open Contacts 1500 VRMS
Between Mutually Insulated Points 2200 VRMS
Insulation Resistance 1000 megohms @ 500VAC

Temperature:

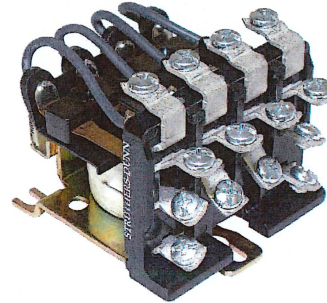
Operating -34 to 74°C (-30 to 165°F)
Storage -40 to 105°C (-40 to 221°F)

Life Expectancy:

Electrical (full load operations) 100,000
Mechanical (no load operations) 10,000,000

Miscellaneous:

Mounting Position Any
Enclosure Optional - 35D203
Weight 14.9oz (379 grams)



COIL DATA FOR PM RELAYS

DC COILS			AC COILS (50/60 Hz)		
Nominal Voltage	DC Resistance In Ohms ± 10% @ 25 ° C	Nominal Current In Milliamperes	Nominal Voltage	DC Resistance In Ohms ± 15% @ 25 ° C	Nominal Current In Milliamperes
6	8.2	732	12	1.4	1070
12	33	364	24	5.0	540
24	132	182	120	120	128
48	526	91	240	587	61
110	2760	40	480	1790	32
125	3570	35			

220 -- Use a 110 volt relay with 2700 to 3300 ohm 5 watt wire wound resistor in series.

Ordering Code **PM T -17 A Y -120VAC**

Series
PM

Type
Screw terminals – NO CODE
.25" Quick connect terminals – CODE T

Contact Arrangement
4 form C (4PDT) - CODE 17

Coil Input
AC-CODE A
DC-CODE D

Contact Material
SILVER ALLOY - CODE Y

Coil Voltage
AC: 12, 24, 120, 208, 240, 480 (VAC)
DC: 6, 12, 24, 38, 48, 110, 125 (Add VDC)

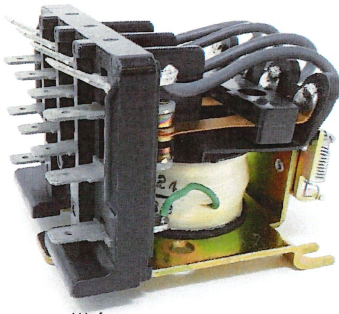
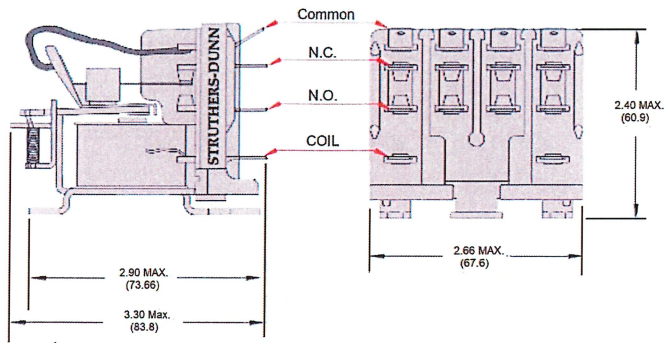
PM Series 10A - 35A Power Relay

4PDT

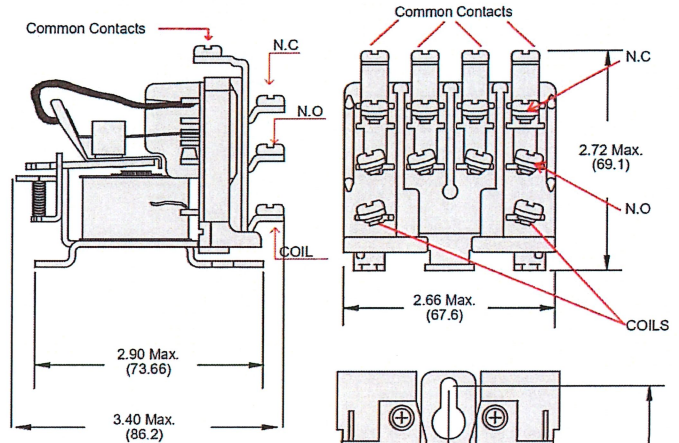
Max Outline Dimensions

Dimensions Shown in inches & (millimeters)

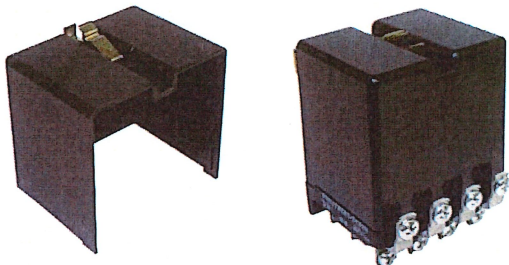
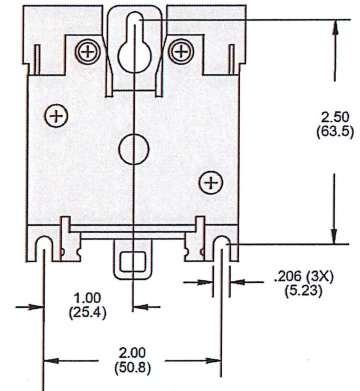
PMT - 1/4 QC Terminal Style Base



PM - Standard with Screw Terminals



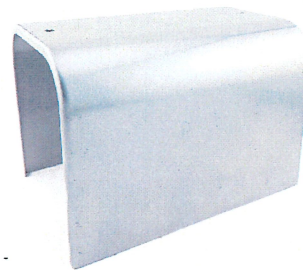
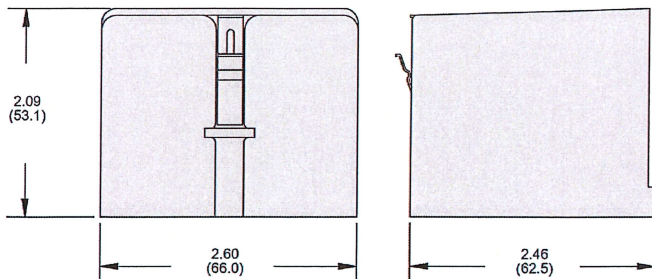
Recommended Torque
For 8-32 Terminal Screws
16 Inch lbs MAX



Dust Cover Optional Part Number - 35D203

Outline Dimensions
Dimensions Shown in inches & (millimeters)

PM Dust Cover



Part Number - 35D227
Metal Enclosure

